

PALE MORNING DUNS EPHEMERELLA SPP.



PMD Nymph

Identification

- Dark brown to cinnamon modeled body coloration and pattern
- Often with lateral light lines running the length of the body
- Platelike gills on the abdomen (not feather-like)
- Three tails, but they are easily broken
- Size: 0.25 - 0.4 in.



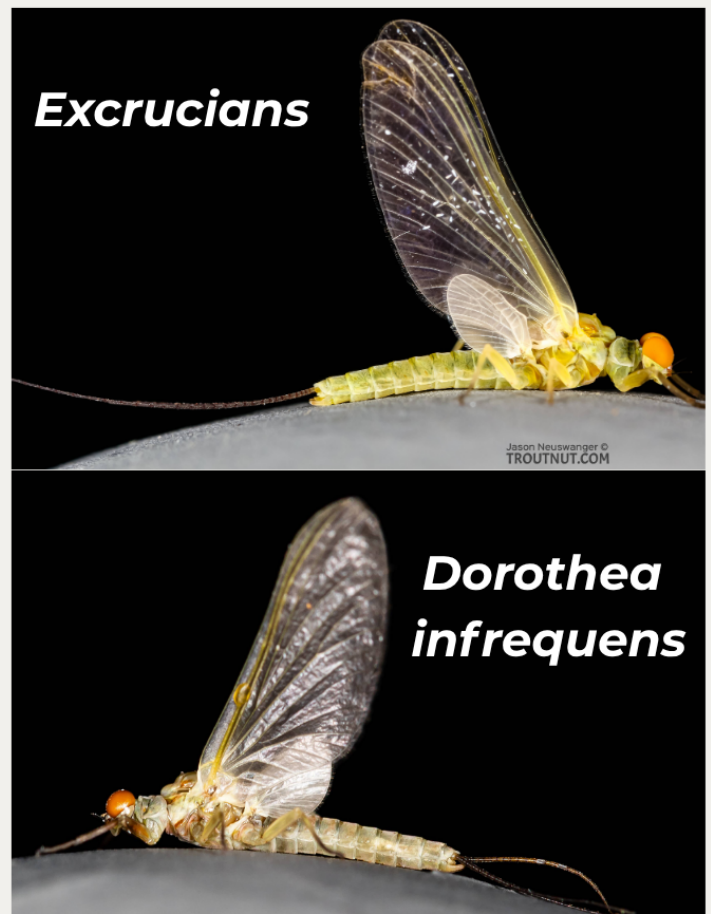
PMD Adult

Identification

- Body is light cream-yellow
- Hind wing 1/4-1/3 length of front and with distinctive bump on leading side
- Size: 0.25-0.45 in (#18-#14)

Biology

PMDs are a broad category that describe multiple species within Ephemerella. The slightly larger species, (*Dorothea infrequens*) hatches before the smaller species (*Excrucians*) but their hatches can overlap. Emergence typically occurs from mid June-mid July.



Angling Tip:

Many PMDs will hatch, or partially hatch, into their adult form underwater and struggle to the surface. An emerger fly with a yellow split wing case can be very effective right before the hatch. PMDs are notoriously poor emergers, and cripples/ still-born patterns during the hatch can be very effective.